



February 2016

A NOTE FROM OUR ADMINISTRATOR

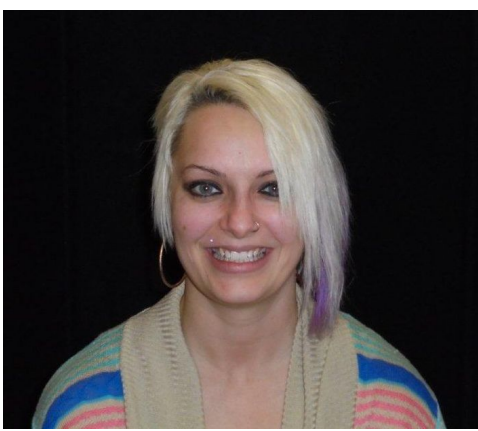
For just about everyone, a new year always brings expectations and challenges plus resolutions for a better life. Here at WINGS it means a re-commitment to offering high quality treatment to any adolescents in Minnesota who need it. To that end we've added staff who will help us provide that treatment and revamped our Facebook page to share with everyone the work that we do. We look forward to strengthening our existing relationships and developing new ones.

PROGRAM SPOTLIGHT

New and Improved Facebook Page

We have just launched the new and improved Facebook page for WINGS. Hopefully this will be yet another way for people to keep up with the great work that we are doing. We'll have updates on projects going on in the building, new staff hires, and info on events that we attend. So come check it out! We've included a link at the end of the newsletter under 'Stay Connected' or search for 'WINGS Adolescent Treatment Center' on Facebook.

MEET OUR STAFF - HEATHER HAVEMEIER



WINGS is proud to welcome Heather Havemeier to our clinical team as our newest counselor. Here she is in her own words: "I recently graduated in May of 2015 from St. Cloud State University with a double Bachelor's Degree in Community Psychology and Chemical Dependency. I previously worked at Dellwood Recovery Center in Cambridge MN and I have experience working with both adults and adolescents. I look forward to working here

at WINGS and seeing the growth amongst the adolescent population that comes through here."

BED AVAILABILITY

Right now we have several openings for both male and female beds. But please call us at 320-593-0440 as this information can change rapidly.

UPCOMING EVENTS

MSSA Conference: March 16-18 in Minneapolis. Click [here](#) for more information.

Evergreen Conference: March 24 & 25 in Bemidji. Click [here](#) for more information.

MACMH Conference: April 24-26 in Duluth. Click [here](#) for more information.

MSCA Conference: May 1-3 at Madden's on Gull Lake outside Brainerd. Click [here](#) for more information.

RATES AND CODES

Level of Care	Revenue Code	HCPCS Code	Modifier	Rate
Room & Board	1002 - Non-Hospital-Based Room and Board component only		HA Adol	74.54 / Day
Primary Inpatient Treatment	0944 - Drug Rehabilitation	H2036	HA Adol, U5 Med Svcs	227.05 / Day
Primary Inpatient Treatment	0945 - Alcohol Rehabilitation	H2036	HA Adol, U5 Med Svcs	227.05 / Day

Our total daily rate comes to \$301.59.

WINGS would like to apologize if you feel that you have received this e-mail in error.

We make every effort to deliver our newsletter to people that we feel would benefit from information on our program. Please use the link provided below to unsubscribe to this newsletter if you feel that it does not fit your needs. If you know of someone else who may benefit from our newsletter please forward a copy of this to them.

WINGS 1326 E Ripley St. Litchfield MN 55355

Phone: 320-593-0440 Fax: 320-593-0440

www.wingsats.com

wingspr@wingsats.com

Stay Connected

Like us on Facebook 

Copyright © 2015. All Rights Reserved.